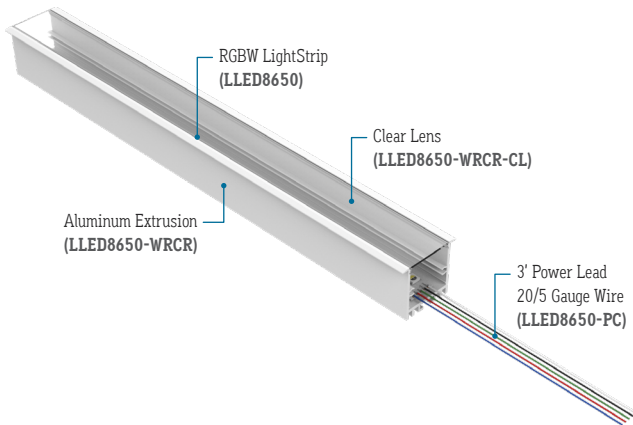


± 0.15" Tolerance



FEATURES

APPLICATIONS	Accent, Decorative, Surface, Recessed, Pendant Lighting
LAMP TYPE	Color Changing LEDs: Red, Green, Blue, White
LENS	Clear, 50% Semi-Frosted, or 100% Frosted
VIEWING ANGLE	120°
MOUNTING	Mounting Channel or Mounting Clips (Sold Separately)
WEIGHT	0.275 lbs per foot
CONSTRUCTION	Aluminum Extrusion
LENGTH	Built to Order
LISTING	Dry Location UL2108, CSA C22.2 #9 UL8750, CSA250
INSTALLATION	Link to Installation Instructions
ELECTRICAL	
DIMMING	DMX-512
MAXIMUM RUN (Based on 5 Amps)	10' (11W) 13' (9W)
MAXIMUM RUN (Based on 4 Amps for Class II)	8' (11W) 10' (9W)
VOLTAGE	24VDC
DRIVER	Remote (Sold Separately)
TEMPERATURE RATINGS	Operating / Startup: -20° to 48°C (-4° to 120°F) Storage: -40° to 76°C (-40° to 170°F)

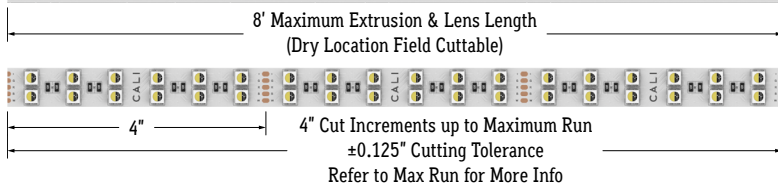
LLED8650-WRCR | ACCENT & COVE

PROJECT

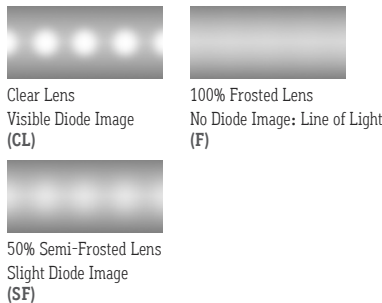
TYPE



LIGHTSTRIP, EXTRUSION, & LENS



LENS

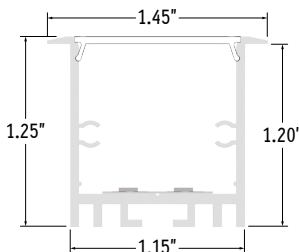


LIGHT LOSS FACTORS

LENS	EFFICACY LOSS
Clear (CL)	0%
50% Semi-Frosted (SF)	12.5%
100% Frosted (F)	25%

Example: 3.0K CCT LED with Frosted Lens. 25% of 100 is 25. 100 - 25 = 75. The Efficacy of 3.0K CCT LED with Frosted Lens is 75.

END VIEW



Clear Lens (CL)
50% Semi-Frosted Lens (SF)
100% Frosted Lens (F)

SERIES	LENS	WATTS PER FOOT	DIMMING	LED	LISTING	FINISH	FIXTURE LENGTH
LLED8650-WRCR	-	-	- DMX	-	- DRY	-	-
LLED8650-WRCR	Clear Lens (CL)	9 Watts (9W)	DMX-512 (DMX)	Red, Green, Blue, 3000K White*1 (RGBW)	Indoor (DRY)	Natural Silver*2 (NA) Polished (PA)	Specify Length in Feet & Inches Example: 7'8"
	50% Semi-Frosted Lens (SF)	11 Watts (11W)		Red, Green, Blue, 6000K White (RGBCW)		White (WH) Satin / Silver (SA)	
	100% Frosted Lens (F)					Black (BK)	

*1 Standard LED: RGBW if left blank

*2 Standard Finish: Natural Silver if left blank

CALIFORNIA ACCENT LIGHTING, INC.

2820 E. Gretta Lane, Anaheim, CA 92806
ph. 800.921.CALI (2254) | fx. 714.535.7902 | info@calilighting.com | calilighting.com

© CALI. All rights reserved. CALI reserves the right to make changes or withdraw specifications without prior notice.





CALIFORNIA
ACCENT
LIGHTING
INC

LLED8650-WRCR

ACCENT
& COVE

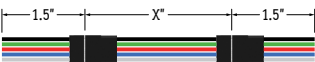
ACCESSORIES (Sold Separately)

Click image for additional information



Power Connector (20/5 Gauge Wire)
LLED8650-PC (33" Standard)
LLED8650-PC-X (X = Specify Length)

Note: Connector type subject to change without notice.
Click on image to see cut sheet for details.



Continuous Connector (20/5 Gauge Wire)
LLED8650-CC (3" Standard)
LLED8650-CC-X (X = Specify Length)



DMX Decoder
(DMX-RGBX)



Standard DMX Controller
(DMX-RGBW-128C)

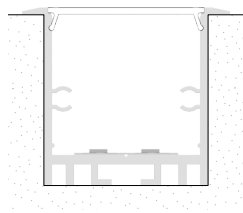


Standard DMX Controller
(DMX-RGBW-1024C)

LAMP SPECIFICATIONS

LAMP NUMBER	CORRELATED COLOR TEMPERATURE	L70 LED LIFE
RGBW	Color Changing: Red, Green, Blue, 3000K White	50,000 hrs.
RGBCW	Color Changing: Red, Green, Blue, 6000K White	50,000 hrs.

MOUNTING OPTION



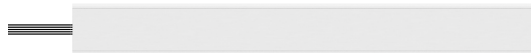
Recessed Mount

PART NUMBER	WEIGHT	SPECIFY FINISH	SPECIFY LENGTH	SPECIFY QUANTITY	UNIT
LLED8650-CC-X*	Varies by Length				Each
LLED8650-PC-X*	Varies by Length				Each

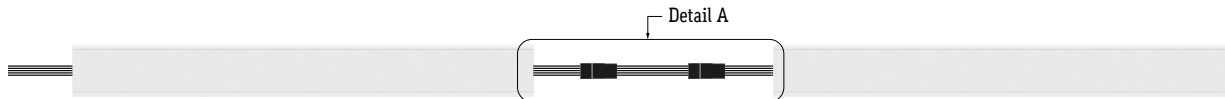
*Leave blank for Standard option

DESIGN GUIDELINES

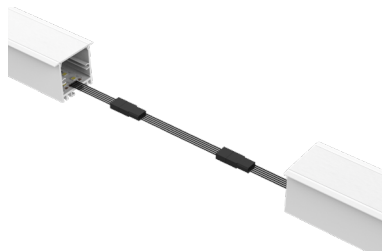
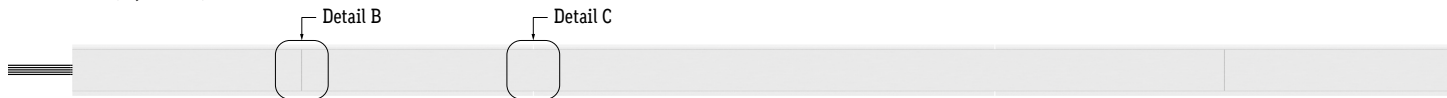
Individual Fixture (Up to 8')



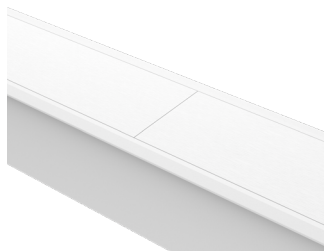
Runs with Continuous Connector



Continuous Run (Dry Location)



Detail A
Continuous Connector
(LLED8650-CC)



Detail B
Two Lenses Meet
(Dry Location)



Detail C
Continuous Connection
(Dry Location)

CALIFORNIA ACCENT LIGHTING, INC.

2820 E. Gretta Lane, Anaheim, CA 92806
ph. 800.921.CALI (2254) | fx. 714.535.7902 | info@calilighting.com | calilighting.com

© CALI. All rights reserved. CALI reserves the right to make changes or withdraw specifications without prior notice.

