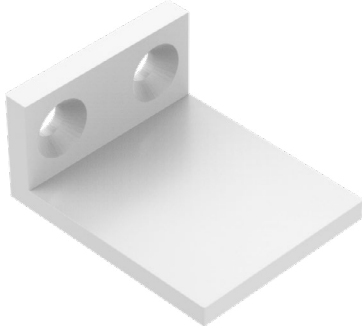
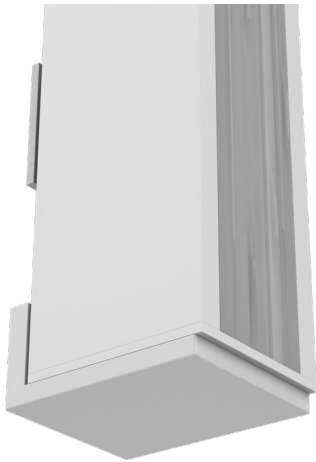


Perspective View



Assembled Detail

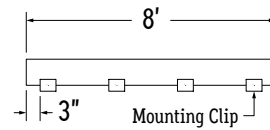


Note: The Vertical Stopper is to be used in conjunction with mounting clips to prevent downward sliding when luminaires are mounted vertically.

1. Measure area where luminaire will be installed. Use a laser line to create a reference line along installation area, ensuring consistent alignment of mounting clips. Mark location where each mounting clip and vertical stopper will be installed along reference line.

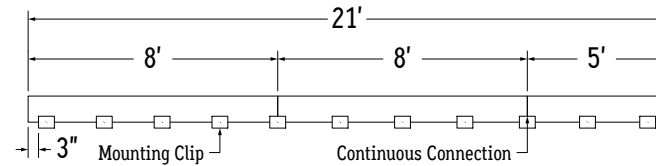
2. Use 1 mounting clip every 2', rounded up. Use 1 vertical stopper at the bottom of each run.
Note: For vertical applications, use a stopper at the bottom to prevent fixture from sliding.

Example 1: Individual run of 8'.



Example 2: Continuous run of 21' (8' + 8' + 5').

Use a mounting clip at the joint between luminaire segments.



3. Lay mounting clips along reference line and pre-drill using an appropriate drill bit for surface and screw size. **Recommended:** 8/32 x 1" screw.

Note: Allow 0.25" clearance for lateral expansion of assembled mounting clips.
Only install mounting clips on flat, even surfaces.

4. Screw mounting clips and vertical stoppers to surface, then snap luminaire into mounting clips, allowing luminaire to rest on the vertical stopper