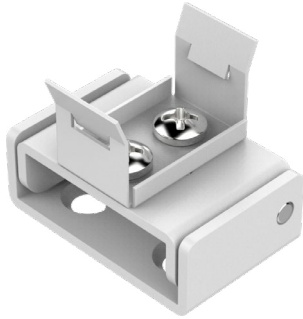
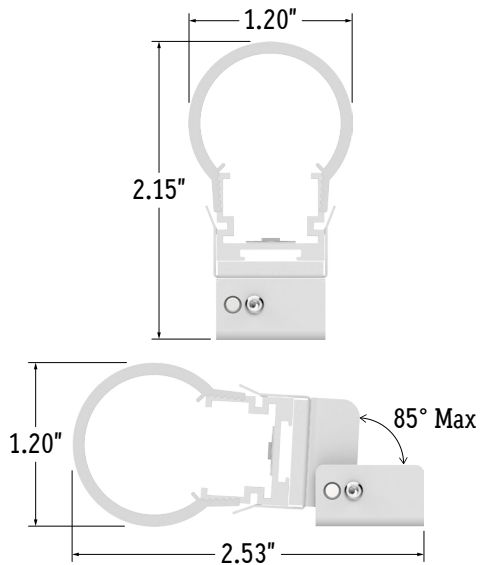


## Perspective View



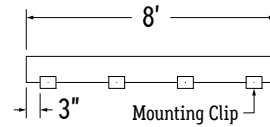
## Assembled End Views



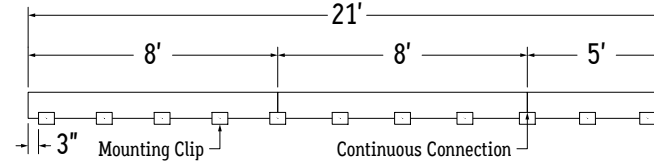
## UNASSEMBLED APPLICATIONS

1. Measure area where luminaire will be installed. Use a laser line to create a reference line along installation area, ensuring consistent alignment of mounting clips. Mark location where each mounting clip will be installed along reference line.
2. Use 1 mounting clip every 2', rounded up.  
**Note:** For vertical applications, use a stopper at the bottom to prevent fixture from sliding.

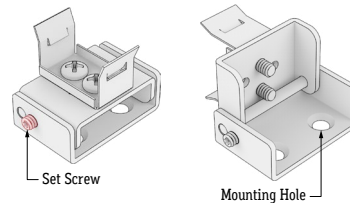
**Example 1:** Individual run of 8'.



**Example 2:** Continuous run of 21' (8' + 8' + 5').  
Use a mounting clip at the joint between luminaire segments.



3. Loosen set screw with included Allen Wrench and tilt top to reveal mounting holes.  
**Note:** Do not remove Set Screw.

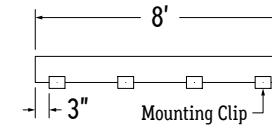


4. Lay mounting clips along reference line and pre-drill using an appropriate drill bit for surface and screw size. **Recommended:** 8/32 x 1" screw.  
**Note:** Allow 0.25" clearance for lateral expansion of assembled mounting clips. Only install mounting clips on flat, even surfaces.

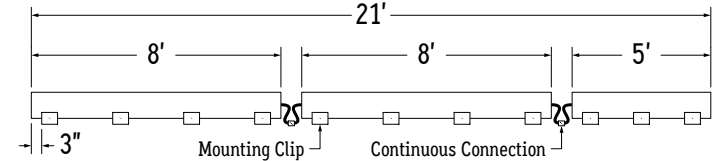
## ASSEMBLED APPLICATIONS

1. Measure area where luminaire will be installed. Use a laser line to create a reference line along installation area, ensuring consistent alignment of mounting clips. Mark location where each mounting clip will be installed along reference line.
2. Use 1 mounting clip every 2', rounded up.  
**Note:** For vertical applications, use a stopper at the bottom to prevent fixture from sliding.

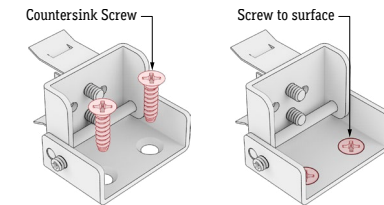
**Example 1:** Individual run of 8'.



**Example 2:** Continuous run of 21' (8' + 8' + 5').  
Apply the 1 mounting clip per 2' rule to each luminaire segment.



5. Screw mounting clips to surface.



6. Adjust mounting clip to desired angle, then tighten set screw to lock in place.  
**Tip:** Use an angle finder or create a jig to ensure accuracy of angles.

