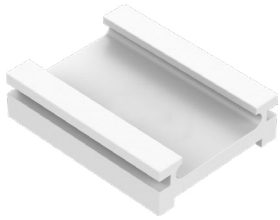
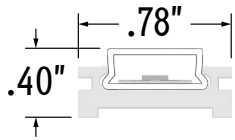


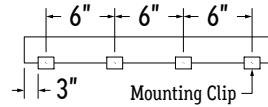
Perspective View



Assembled End View

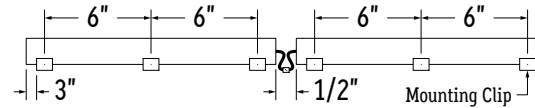


1. Measure area where luminaire will be installed. Use a laser line to create a reference line along installation area, ensuring consistent alignment of mounting clips. Mark location where each mounting clip will be installed along reference line.

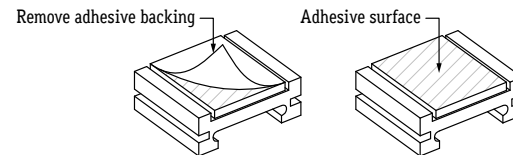


2. Use 1 mounting clip every 6".
Note: For vertical applications, use a stopper at the bottom to prevent fixture from sliding.

3. For continuous dry location runs, use 1 mounting clip every 6".
Note: For vertical applications, use a stopper at the bottom to prevent fixture from sliding.



4. Prepare for mounting by removing adhesive backing from mounting clips.



5. Adhere mounting clips to surface, then snap luminaire into mounting clips.

